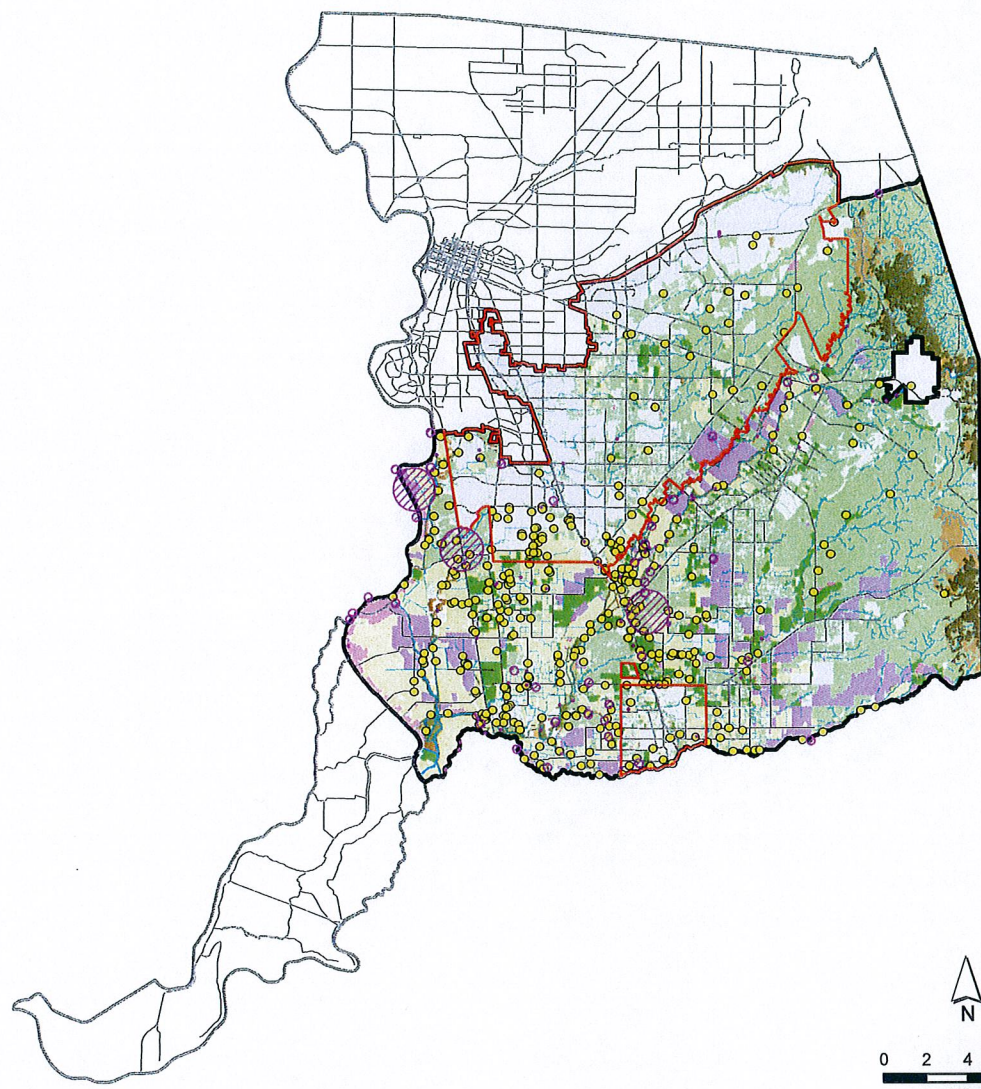


## **Swainson's Hawk**

T:\GIS\SACRAMENTO\ARMS\HCP\SPECIES\_MAPS\DOCUMENT\_MAPS\SWAINSONS\_COUNTY\_AWD\_7/27/2010@4:21:14 PM



### Range of Swainson's Hawk in the SSHCP Plan Area

- Consolidated Species Occurrences\*
- ▨ Swainson's Hawk (CNDDB)
- ▭ Urban Development Area
- ▭ Plan Area
- ▭ Cropland
- ▭ Irrigated Pasture-Grassland
- ▭ Orchards
- ▭ Streams/Creeks
- ▭ Valley Grassland
- ▭ Vineyards
- ▭ Blue Oak Savanna
- ▭ Blue Oak Woodland
- ▭ Mixed Riparian Scrub
- ▭ Mixed Riparian Woodland
- ▭ Valley Oak Riparian Woodland
- ▭ Woodland Restoration

\*Note: Land Cover Types shown represent suitable habitat for Swainson's Hawk based on the Species - Habitat Use Matrix. "Consolidated Occurrence Data" includes data from numerous sources including data from studies conducted specifically for the SSHCP, project-level studies, professional expertise, and unconfirmed sightings. \*This species may occur throughout the Plan Area where suitable habitat is present.

Sources:  
 California Department of Fish and Game  
 California Natural Diversity Database  
 March, 2010  
 ESTEP Environmental Consulting 2008  
 Rancho Cordova Survey, ESTEP  
 Environmental Consulting 2007  
 Elk Grove Survey, 2003-135 Gill Ranch Survey,  
 Ebird.org 2008-2009 (various sightings)



Figure SWHA-1