



SOUTH
SACRAMENTO
**HABITAT
CONSERVATION
PLAN**
WORKING DRAFT



PREPARED BY:

COUNTY OF SACRAMENTO
CITY OF ELK GROVE
CITY OF GALT
CITY OF RANCHO CORDOVA
SACRAMENTO REGIONAL COUNTY SANITATION DISTRICT
SACRAMENTO AREA SEWER DISTRICT
SACRAMENTO COUNTY WATER AGENCY
CAPITAL SOUTHEAST CONNECTOR JPA

JULY 2010





SSHCP

Overview

- Key changes to document
- Release schedule

Key Changes

- Watersheds as basic planning units
- Conceptual preserve design within UDA; preferred preserve design
- Economics model assumptions verified & revised

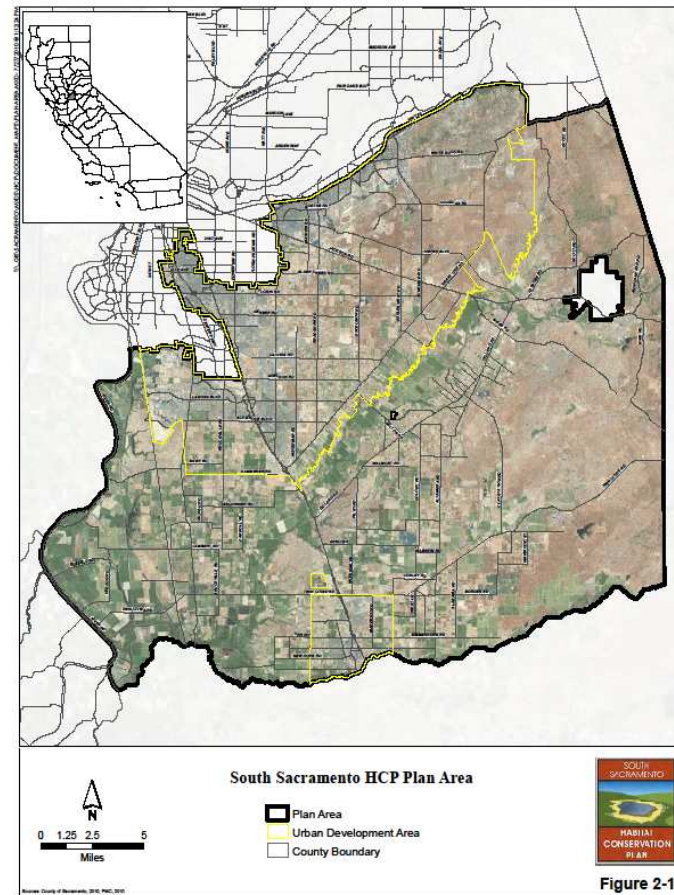
Key Changes

- Preserve buffers
- Stream setbacks
- Covered species impacts analyses
 - Species conserved - but not requesting take
 - Life history assumptions – Primary Conservation Areas
 - Scope of take coverage requested

SSHCP

Plan Area:

Plan encompasses
374,000 acres

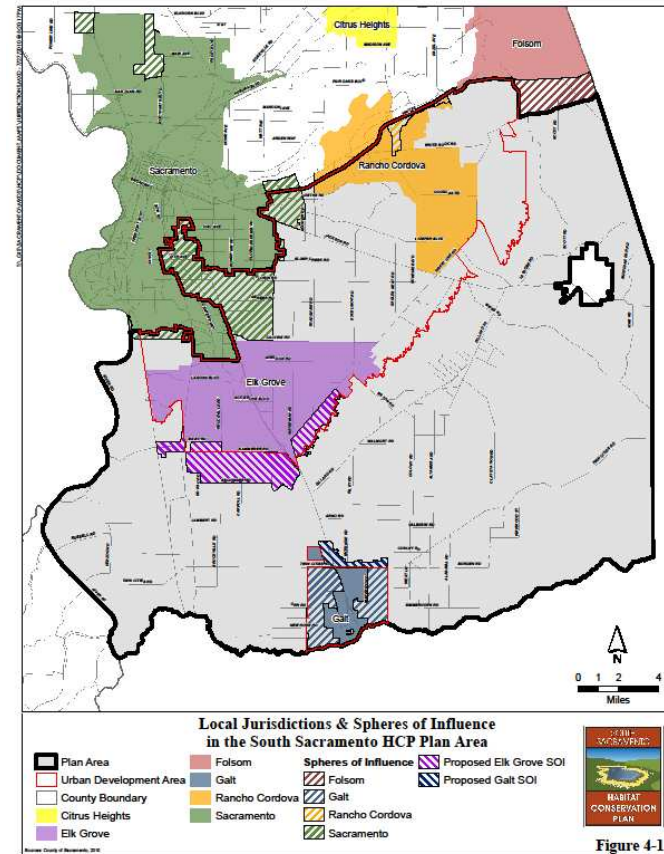


SOIs

- Applications pending with LAFCo
- Reasonably foreseeable impacts analyzed in SSHCP& EIR/EIS
- Development in SOIs not covered but could become so upon:
 - LAFCo approval of SOI
 - Minor modification of Plan

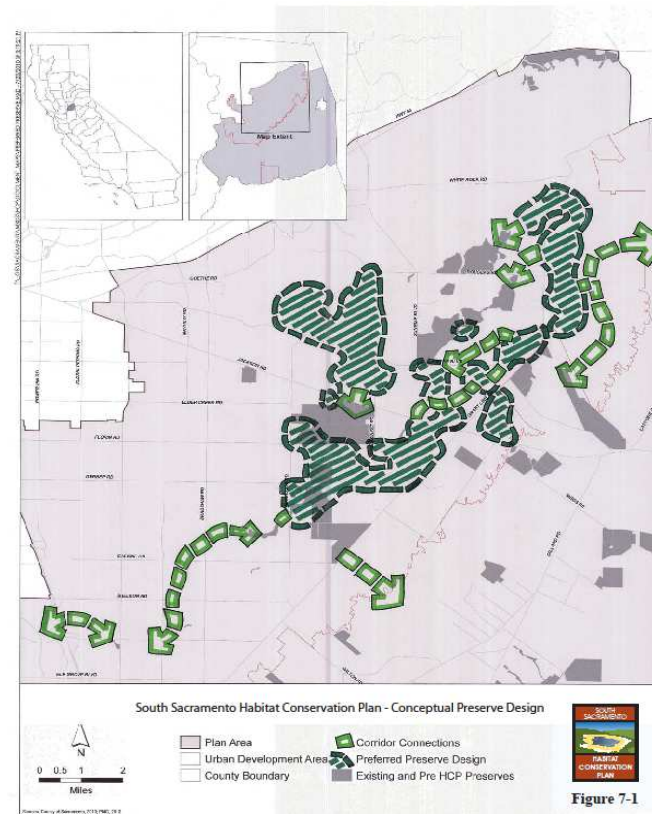
SSHCP

SOIs





Conceptual Preserve Design



Economics and Fees

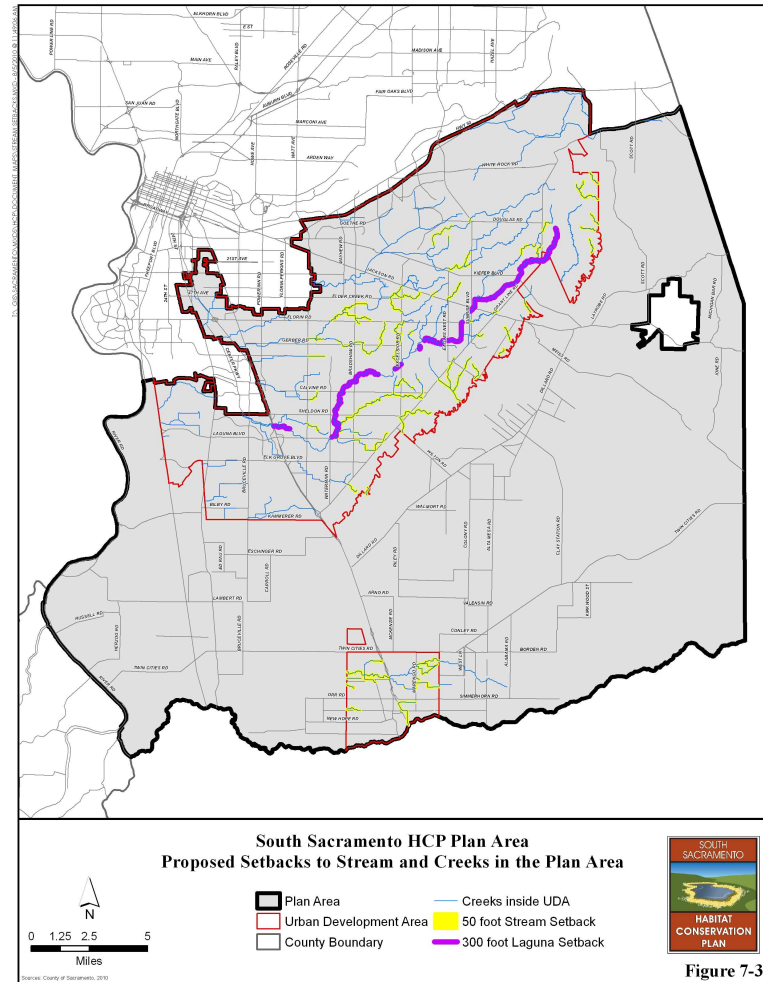
- Changes to assumptions in model:
 - Updated land values to 2007-10 blended rates
 - Corrected impact numbers
 - Compensation for landowners who contribute more than their fair share toward the SSHCP Reserve System
 - Additional upland acreage for wetland restoration
 - Adjusted average size of parcels to be acquired based on what is available

Indirect Impacts and Mitigation - Vernal Pools

- 50-foot managed buffer outside of preserve, AND
- 50-foot setback from preserve boundary, OR
- Mitigate for indirect impacts at 1:1 preservation ratio

SSHCP

Stream setbacks – to assure water quality protection in streams





Species
conserved
- but not
requesting
take

| Common Name | Status | | Reason for removal |
|---|---------------------------|--------------|---|
| | Federal ESA Status | State Status | |
| BIRDS | | | |
| <i>Falco peregrinus anatum</i> American Peregrine Falcon | Delisted, Taxon Recovered | E, FP | Take not likely in UDA. No information on current known of distribution in the UDA. |
| <i>Haliaeetus leucocephalus</i> Bald Eagle | Delisted, Taxon Recovered | E, FP | Take not likely in UDA. No information on current known of distribution in the UDA. |
| <i>Aquila chrysaetos</i> Golden Eagle | -- | FP | Take not likely in UDA. No information on current known of distribution in the UDA. |
| <i>Asio otus</i> Long-Eared Owl | -- | CSC | Take not likely in UDA. No information on current known of distribution in the UDA. |
| <i>Falco columbarius</i> Merlin | -- | - | Fairly rare, but regular in the winter. Migrant in area. Take not likely in UDA. |
| <i>Accipiter striatus</i> Sharp-shinned Hawk | -- | - | Take not likely in UDA. |
| <i>Asio flammeus</i> Short-Eared Owl | -- | CSC | Take not likely in UDA. No information on current known of distribution in the UDA. |
| <i>Plegadis chihii</i> White-Faced Ibis | -- | - | Take not likely in UDA. |
| <i>Icteria virens</i> Yellow Breasted Chat | -- | CSC | Take not likely in UDA. No information on current known of distribution in the UDA. |
| MAMMAL | | | |
| <i>Bassariscus astutus</i> Ringtail | -- | FP | Take not likely in UDA. No information on current known of distribution in the UDA. |

SSHCP

Baseline Revisions

- Verified and revised mapping of land cover types
- Impact numbers revised consistent with mapping corrections
- Added new land cover types : vernal swales, vernal impoundments

TABLE 7-2: MINIMUM PRESERVATION AND RESTORATION REQUIREMENTS FOR EACH LAND COVER TYPES

SSHCP

Take Estimate By Land Cover Type

| Land Cover Types | Impacts Inside the UDA (acres) | Impacts Outside the UDA (acres) | Total (acres) | Preserve Management Effects (acres) |
|--------------------------------|--------------------------------|---------------------------------|---------------|-------------------------------------|
| Blue Oak Savanna | 4 | 51 | 55 | |
| Blue Oak Woodland | 3 | 11 | 14 | |
| Cropland | 6,943 | 390 | 7,333 | |
| Freshwater Marsh | 110 | 26 | 136 | 10 |
| Irrigated Pasture-Grassland | 2,279 | 191 | 2,470 | |
| Mine Tailing Riparian Woodland | 1,826 | 0 | 1,826 | - |
| Mixed Riparian Scrub | 43 | 6 | 49 | 10 |
| Mixed Riparian Woodland | 195 | 58 | 253 | - |
| Open Water | 190 | 1 | 191 | - |
| Orchards | 220 | 16 | 236 | - |
| Seasonal Impoundment | 213 | 6 | 219 | 10 |
| Seasonal Wetlands | 101 | 13 | 114 | 10 |
| Streams/Creeks | 76 | 11 | 87 | - |
| Swale | 108 | 1 | 109 | - |
| Valley Grassland | 25,777 | 1,058 | 26,835 | 50 |
| Valley Oak Riparian Woodland | 12 | 1 | 13 | - |
| Vernal Impoundment | 53 | 5 | 58 | 5 |
| Vernal Pool | 280 | 24 | 304 | - |
| Vernal Swale | 168 | 1 | 169 | 5 |
| Vineyards | 1,269 | 96 | 1,365 | - |
| TOTALS | 39,870 | 1,966 | 41,836 | 100 |

Next Steps

- July 30 - Preliminary document release
- August 13 – Release to Steering Committee & Public
- September 2 – Steering Committee meeting



SSHCP

Next Phase

- 404/401 documents revised and released
- EIR/EIS preparation
- Publication in Federal Register
- Associated public processes

SSHCP

Questions?

