

LAFCO APPLICATION
 Vicinity Map of PG&E Service Area
 With Proposed Annexation Territory

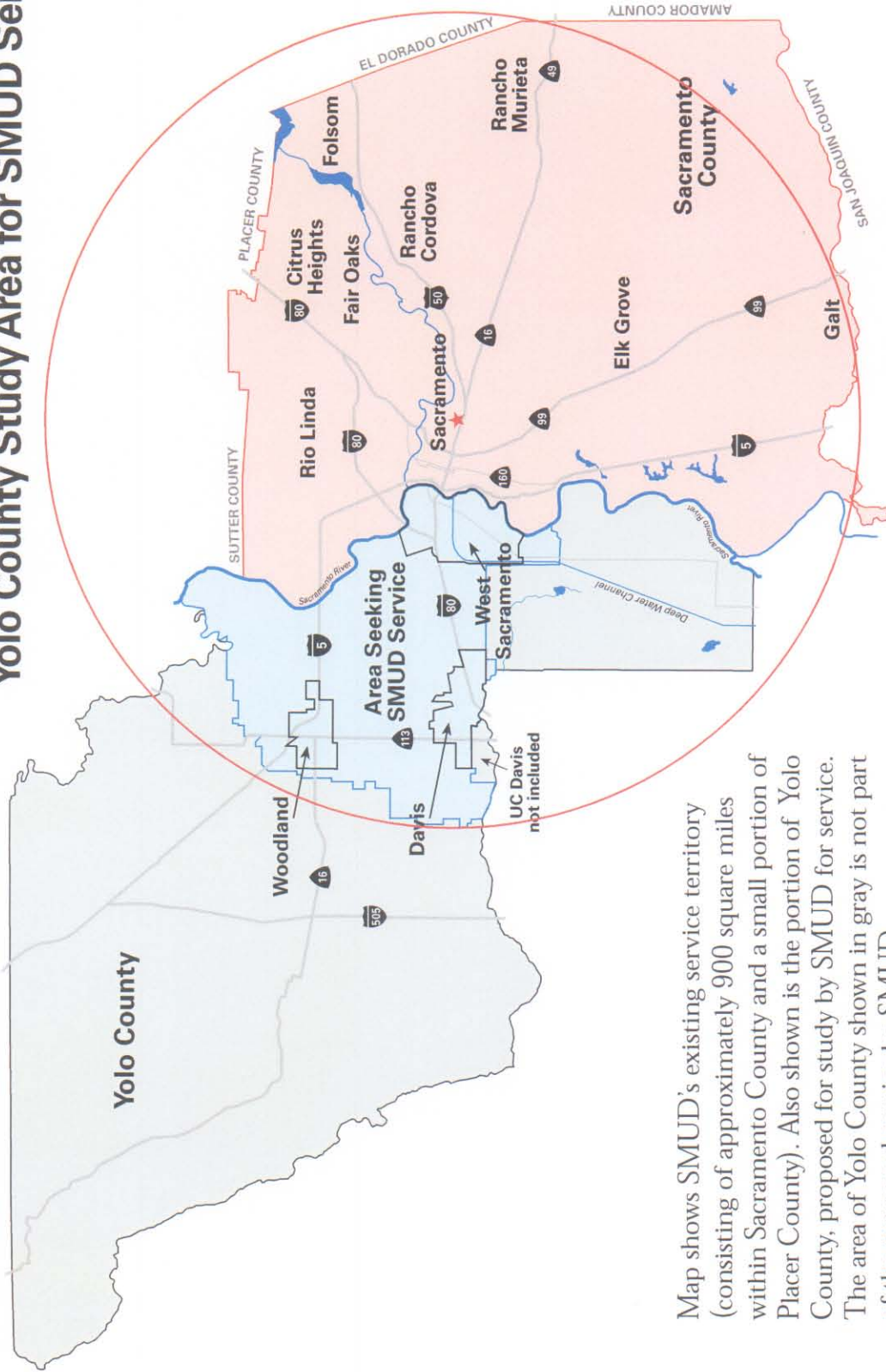
Date:
 JULY 2005

DRAWING / REVISED
 JEM / NUB - DCI

YOLO ANNEXATION PROJECT

DCI

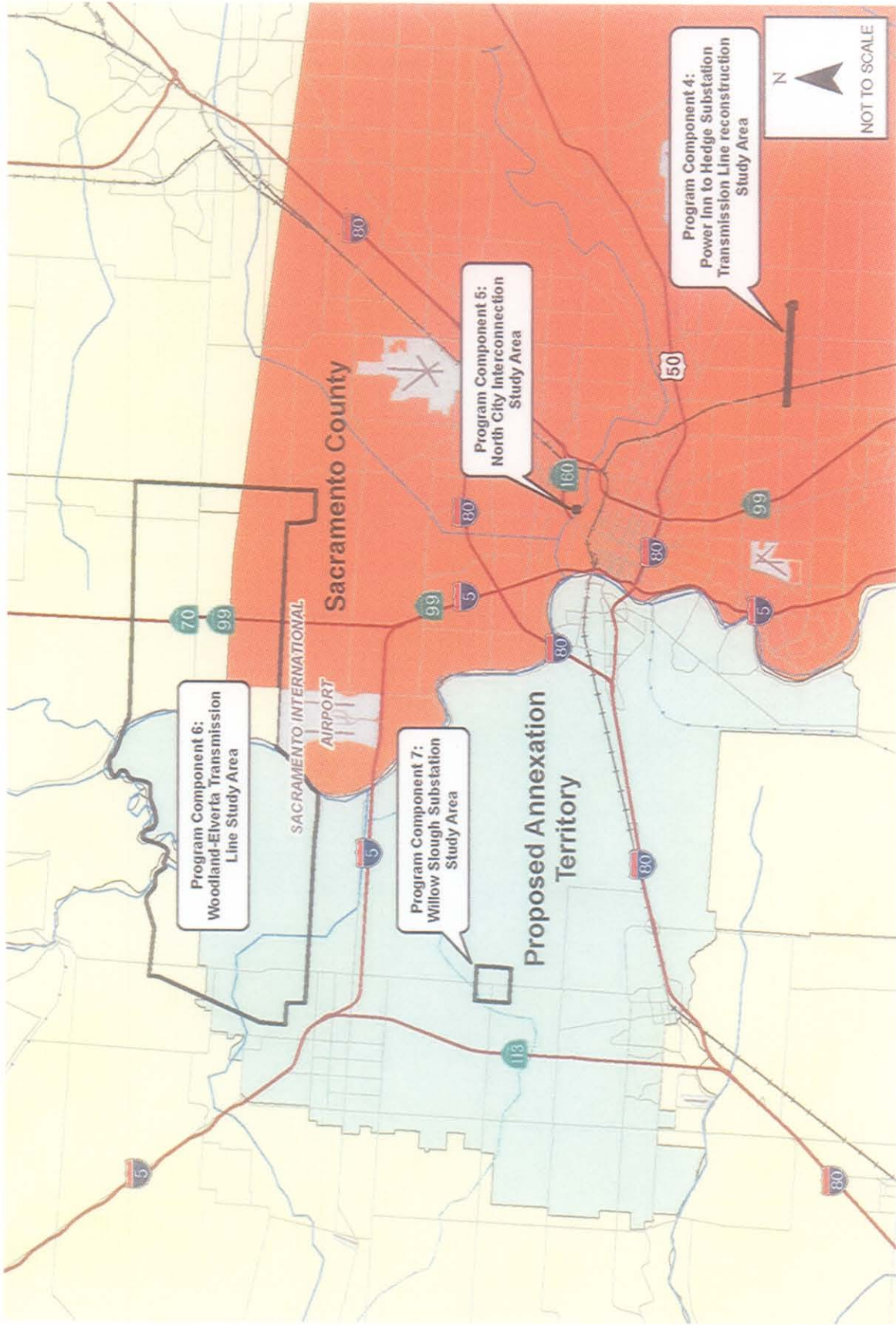
SMUD Service Territory and Yolo County Study Area for SMUD Service

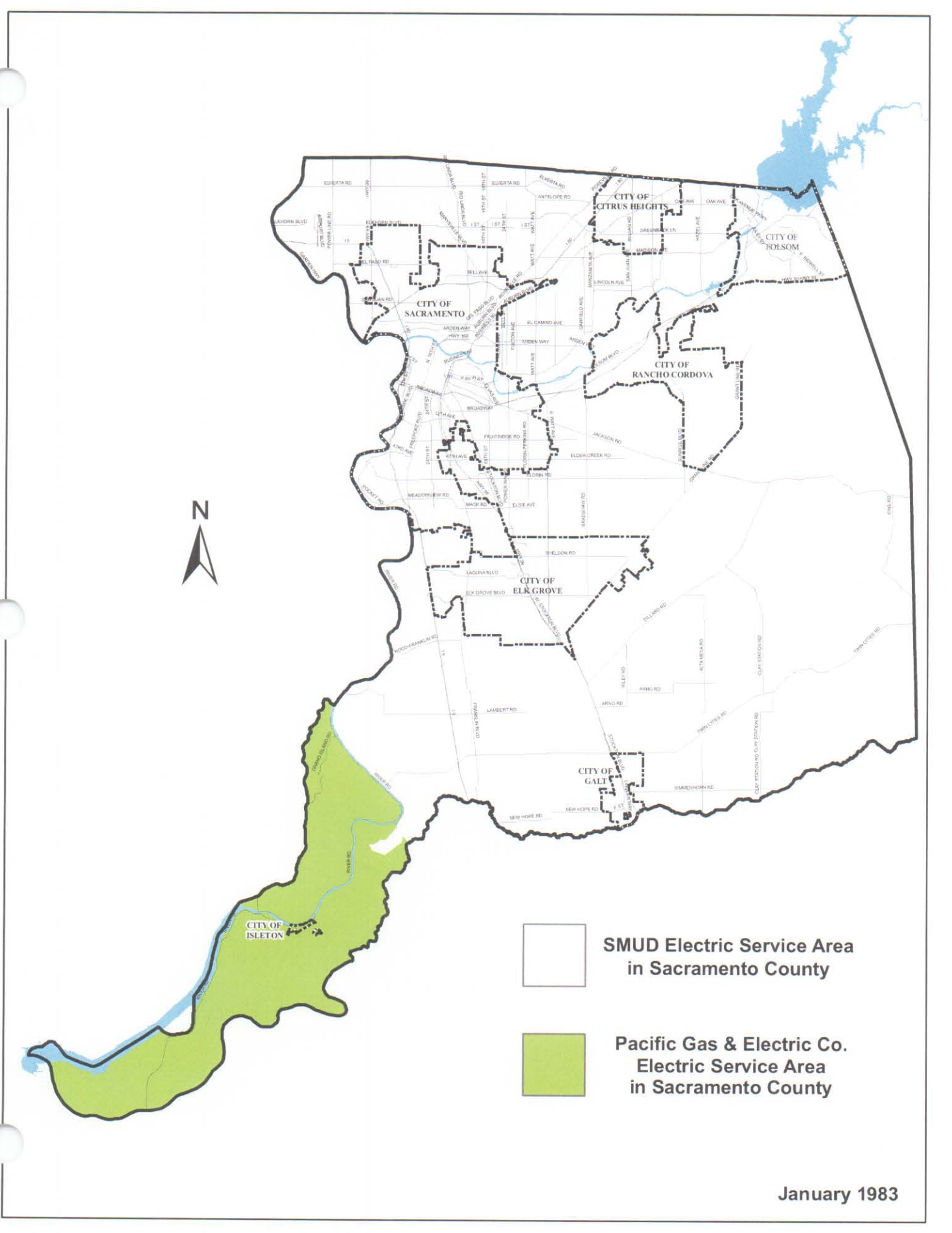


Map shows SMUD's existing service territory (consisting of approximately 900 square miles within Sacramento County and a small portion of Placer County). Also shown is the portion of Yolo County, proposed for study by SMUD for service. The area of Yolo County shown in gray is not part of the proposed service by SMUD.



© A registered service mark of Sacramento Municipal Utility District.





**SMUD Electric Service Area
in Sacramento County**



**Pacific Gas & Electric Co.
Electric Service Area
in Sacramento County**

PG&E Service Territory

